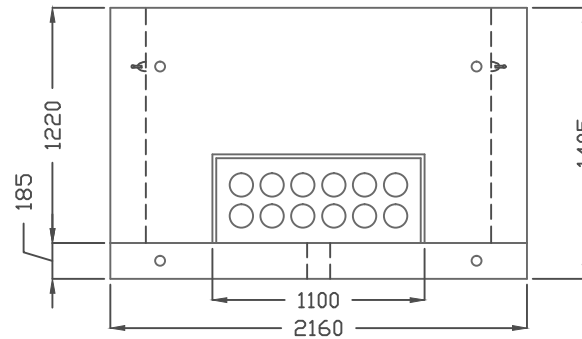
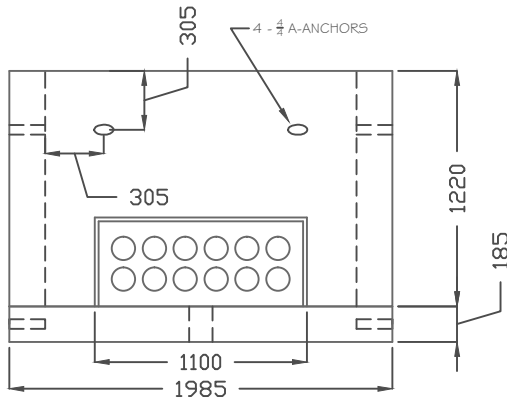


TOP VIEW



SIDE VIEW (1)



SIDE VIEW (2)

DIMENSIONS:

ALL DIMENSIONS IN MILLIMETERS.
+/- 10mm TOLERANCES ON ALL DIMENSIONS

CONCRETE:

STANDARD
STANDARD ACC (ACCELERATED STRIPPING)
10MPa STRIPPING STRENGTH
35 MPa @ 28 DAYS
C-1 EXPOSURE CLASS
3.13 CUBIC YARDS

REINFORCEMENT:

ALL REINF. HAS MIN. 25mm OF COVER

WEIGHT:

PAD APPROX. 8500 LBS/3865 KG
BASE APPROX. 4200 LBS / 1905 KG
ASSEMBLED APPROX. 12700 LBS/5770 KG

NOTES:



58 COOPER ROAD
ROSSLYN, ONT.
Phone: (807) 939-2655
Fax: (807) 939-1788

PRODUCT

TRANSFORMER PAD- MPL 330

CONTRACTOR:

SCALE:

N.T.S

JOB/PRODUCT CODE:

MPL330

DATE	INI.	DESCRIPTION
NOV 2013	MH	ORIGINAL DRAWING